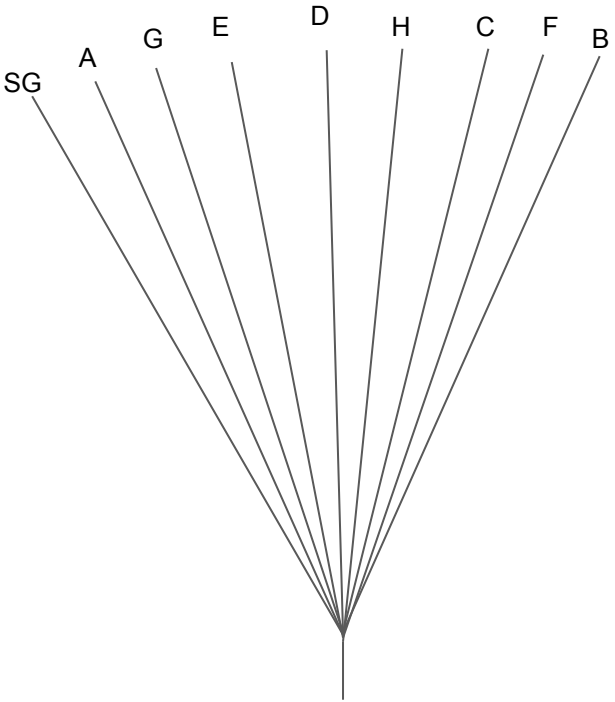
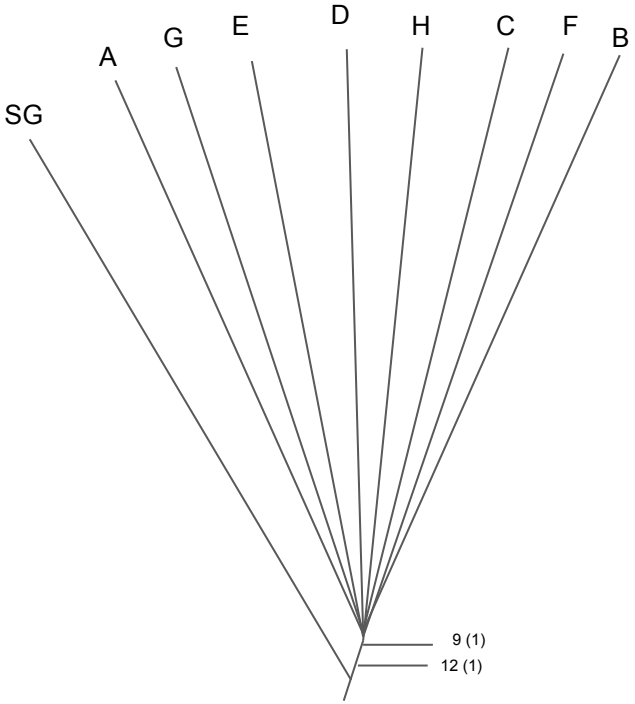


Cladogram 1



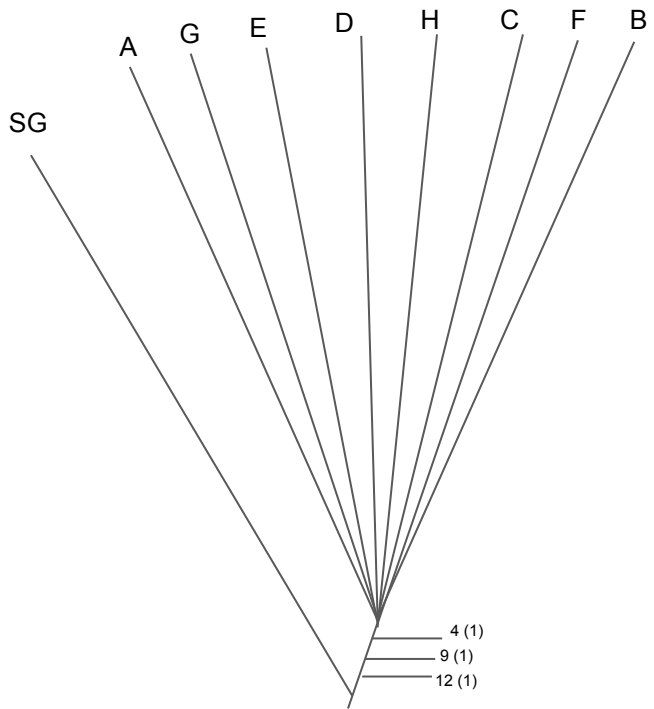
No resolution. All species have 1 common ancestor

Cladogram 2



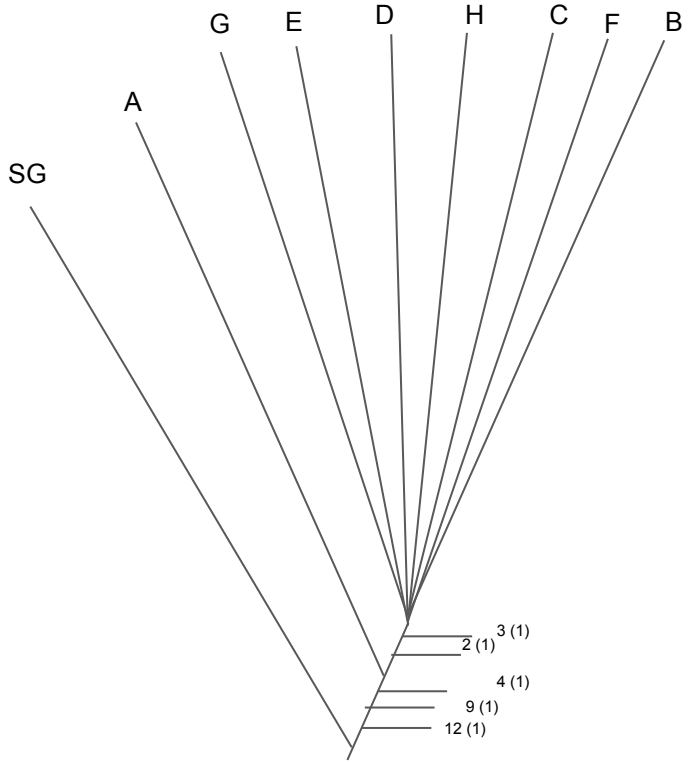
Stomach (5) and jaws (12) appeared

Cladogram 3



Fins or limbs (4) were added

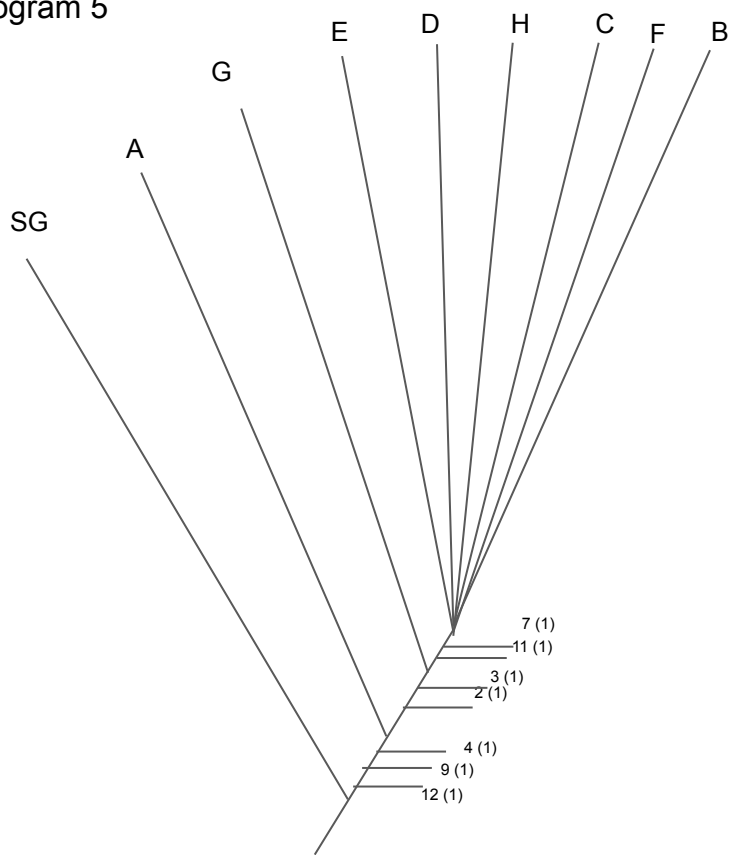
Cladogram 4



Skeletal tissue (2) and lungs and derivatives (3) appeared

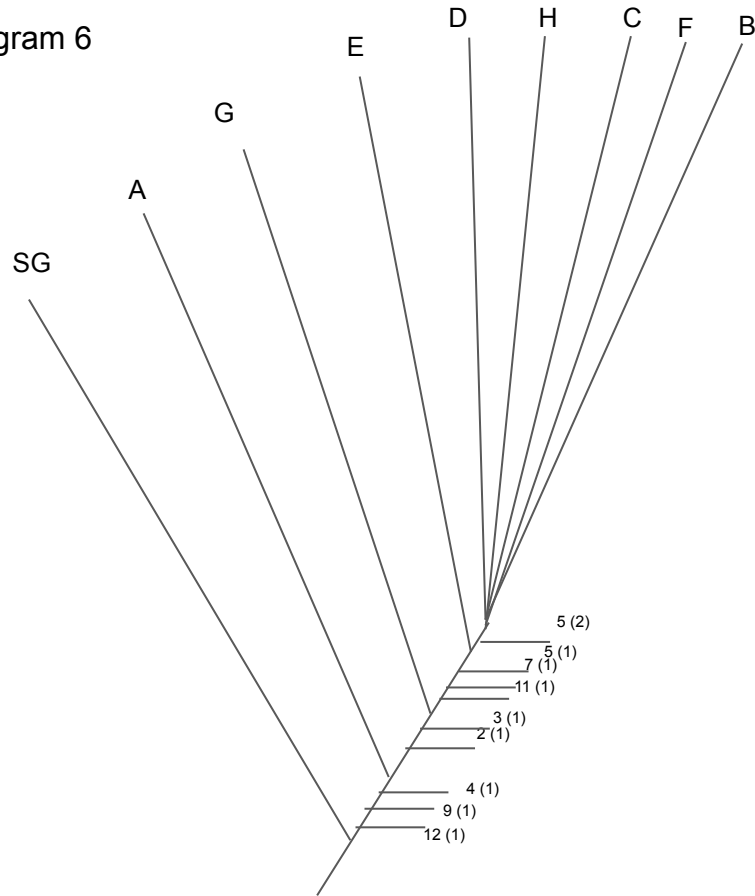
Was not added in previous redundant cladogram (2) due to instructions only stating 2 characteristics could be added in one not 3

Cladogram 5



Amnion (7) and adult nph. System (11) were added

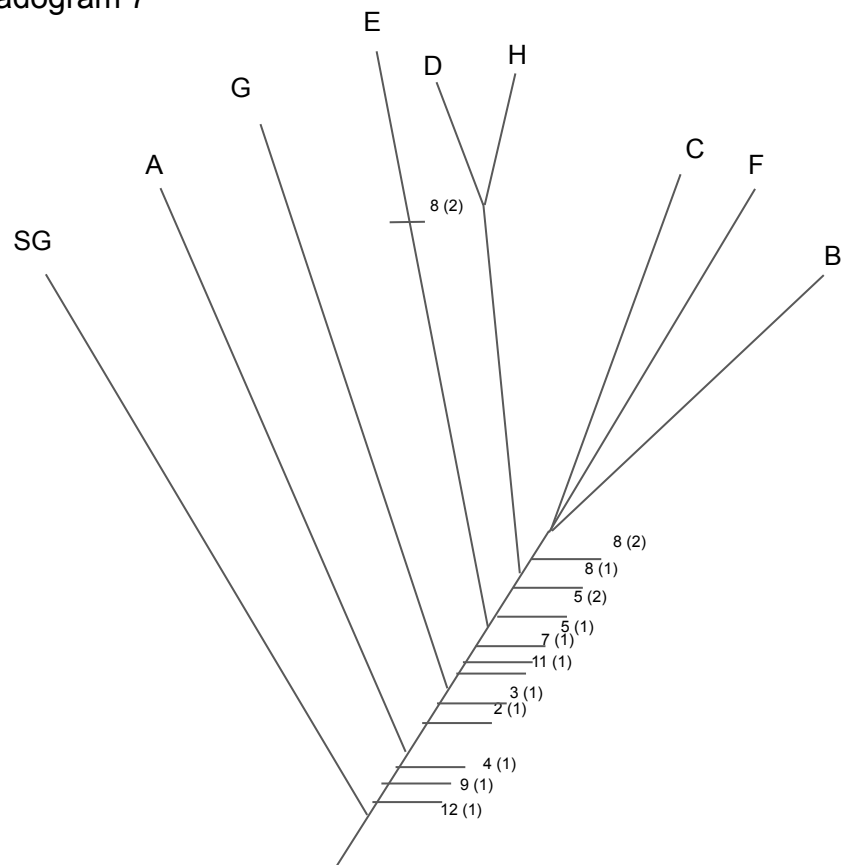
Cladogram 6



Sacral vertebrae (5), first and second derived states 5(1) and 5(2)

were added

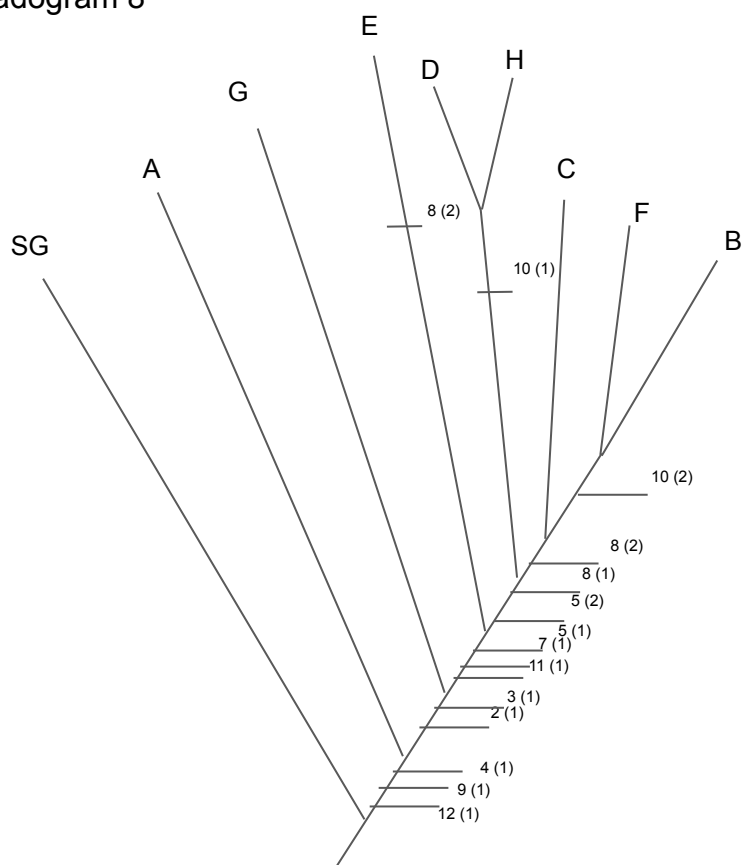
Cladogram 7



No. of digits on hind limbs (8), first and second derived states 8 (1)

And 8 (2) were added. 8 (2) added to E due to convergent parsimony of Non homologous character

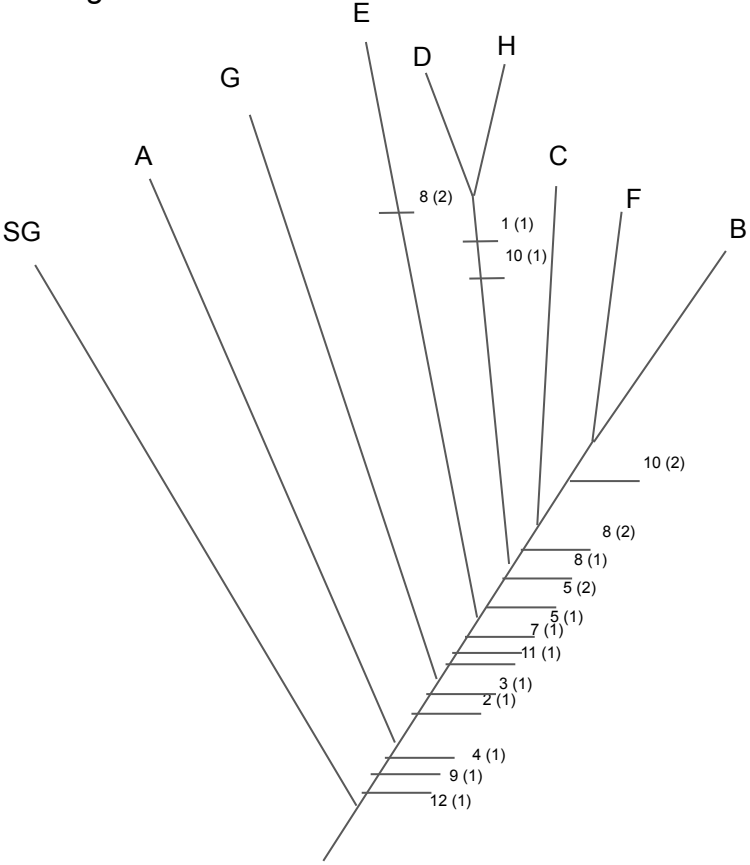
Cladogram 8



Temporal fenestrae (10), first and second derived states 10 (1)

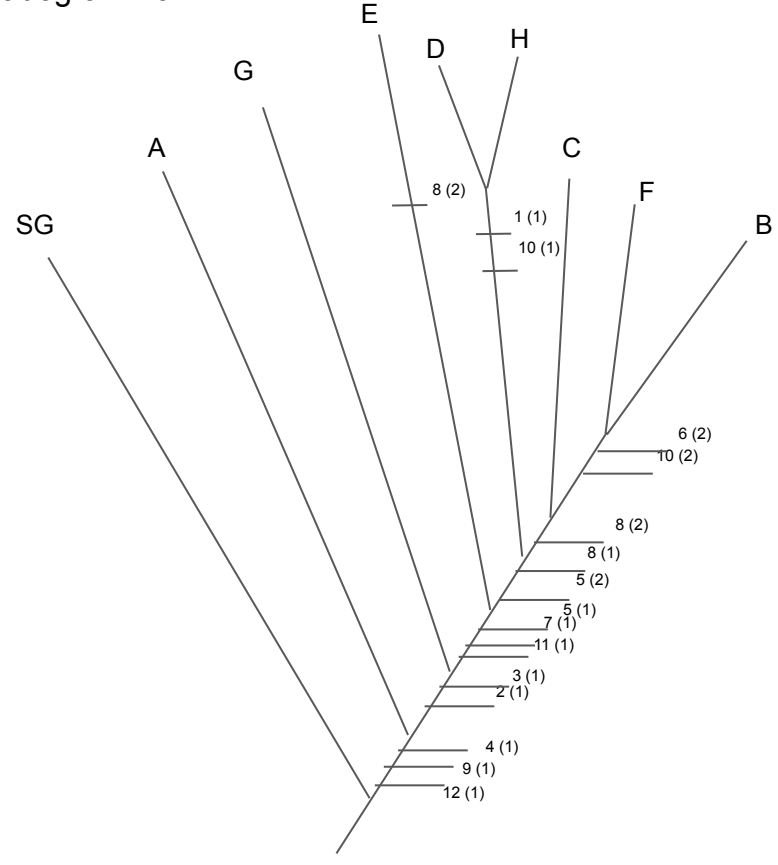
And 10 (2) were added.

Cladogram 9



Hair or fur (1) was added

Cladogram 10



Gizzard (6) was added

Final Cladogram

