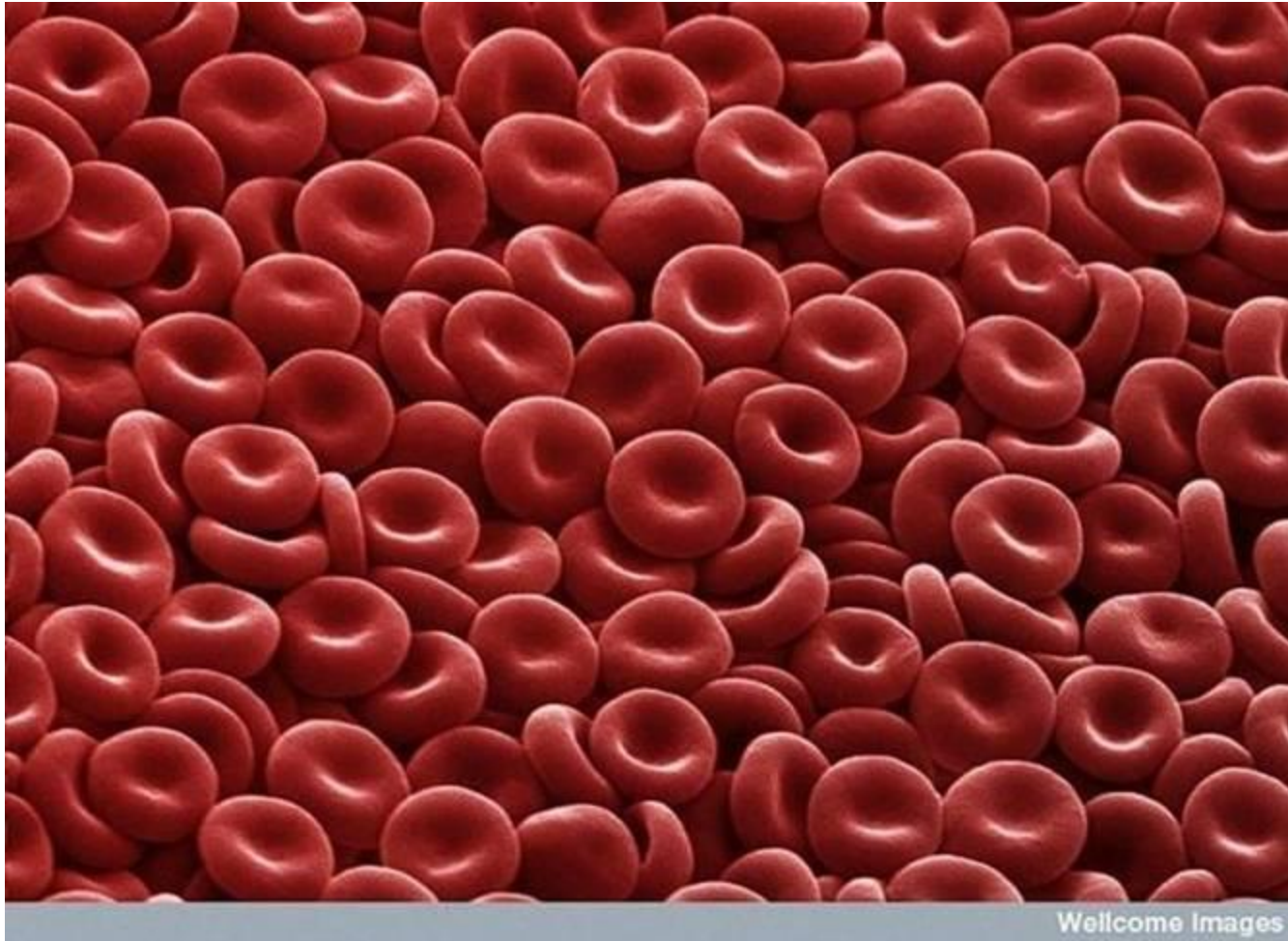
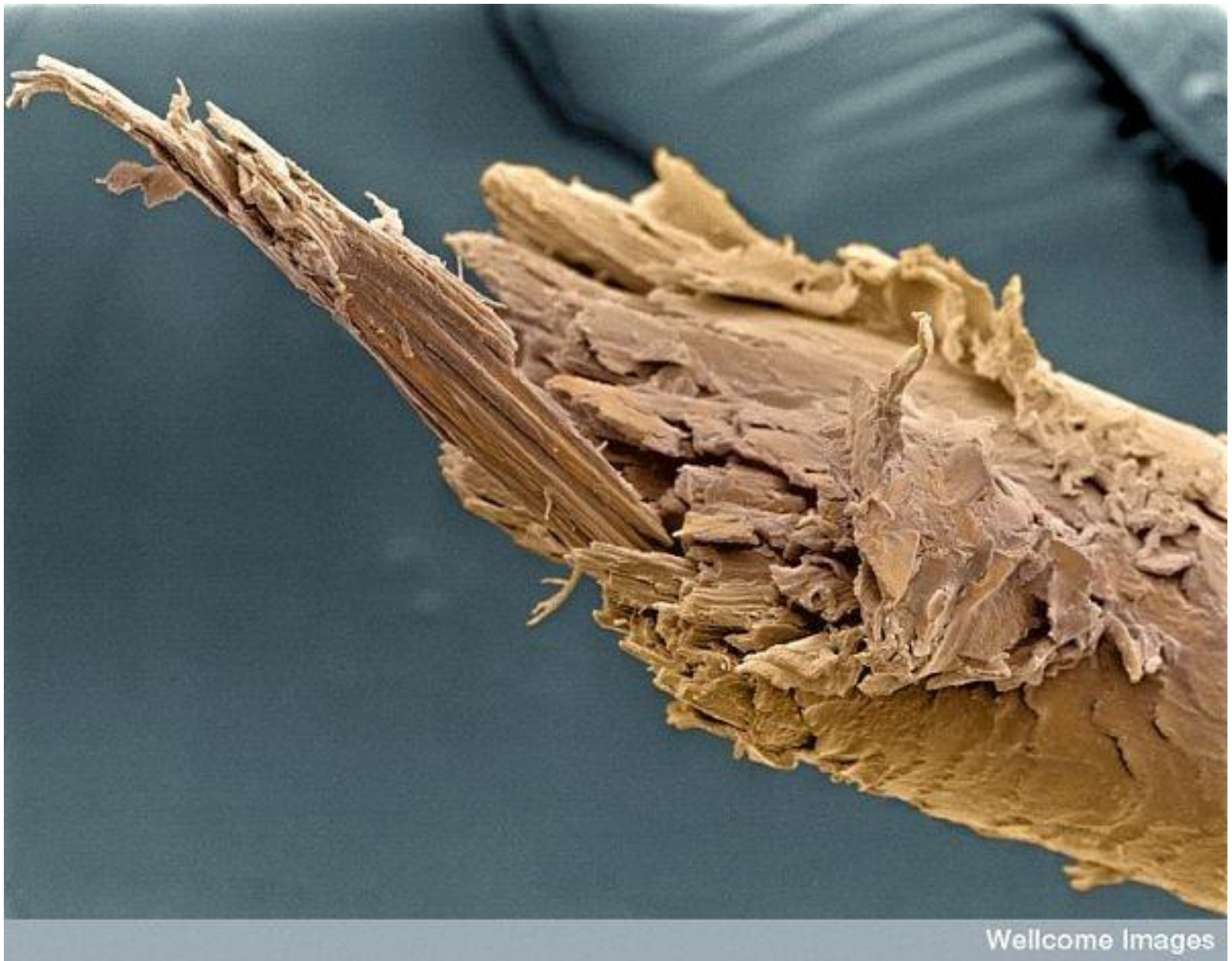


Some Amazing Scanning Electron Microscopy Images sent to me for posting by a fellow student, Joady Lengacher

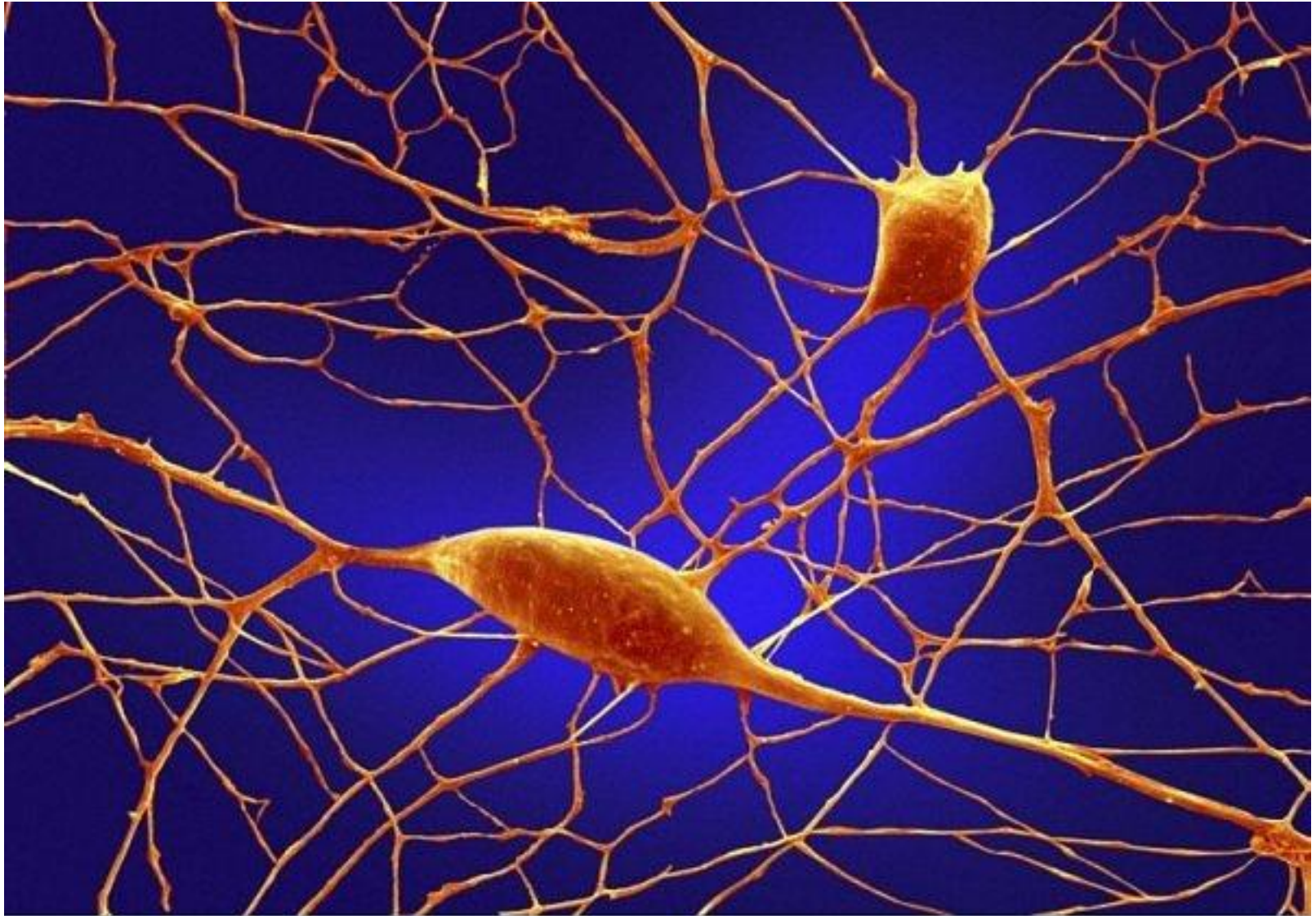


1. Red Blood Cells



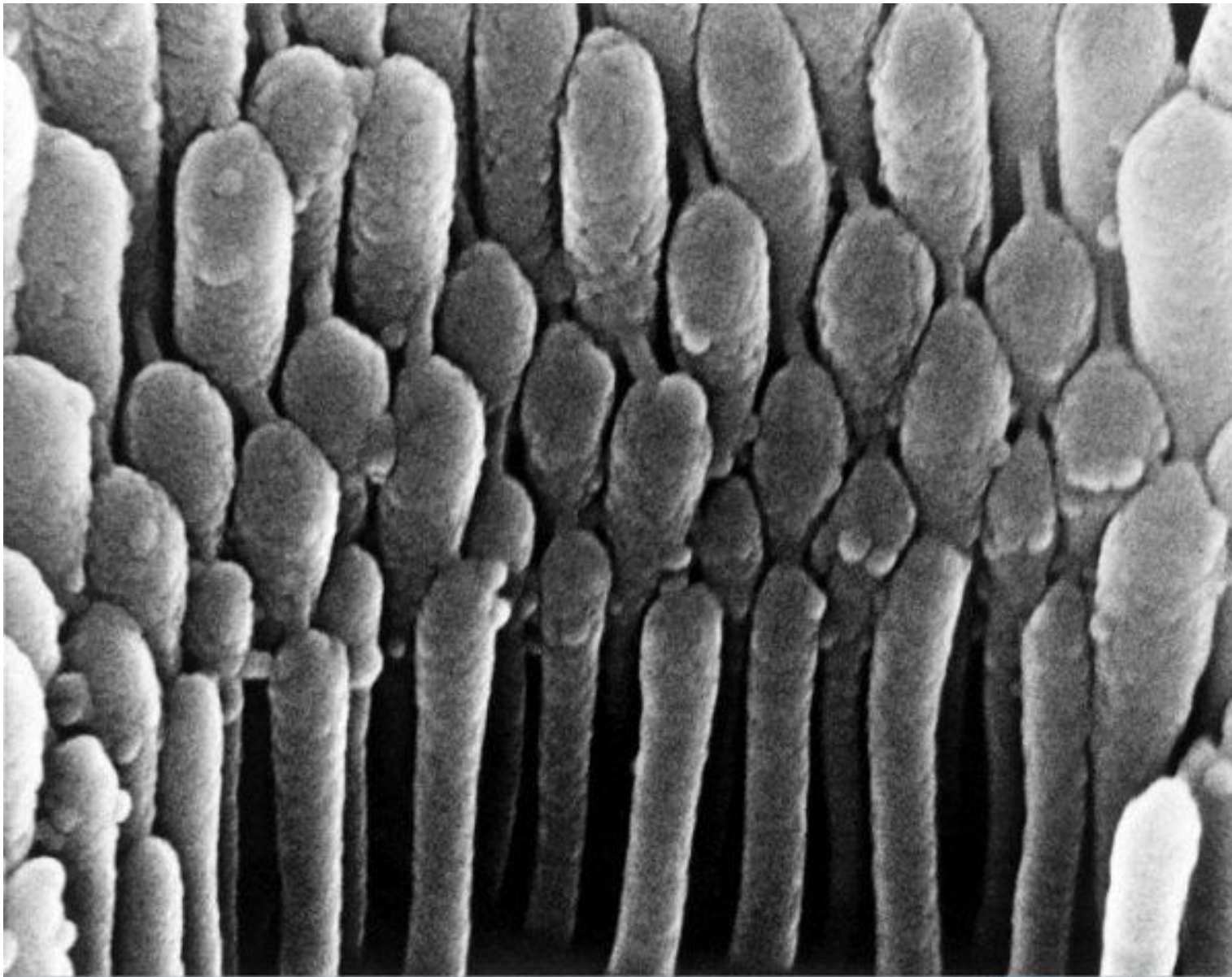
Wellcome Images

2. Split End of Human Hair



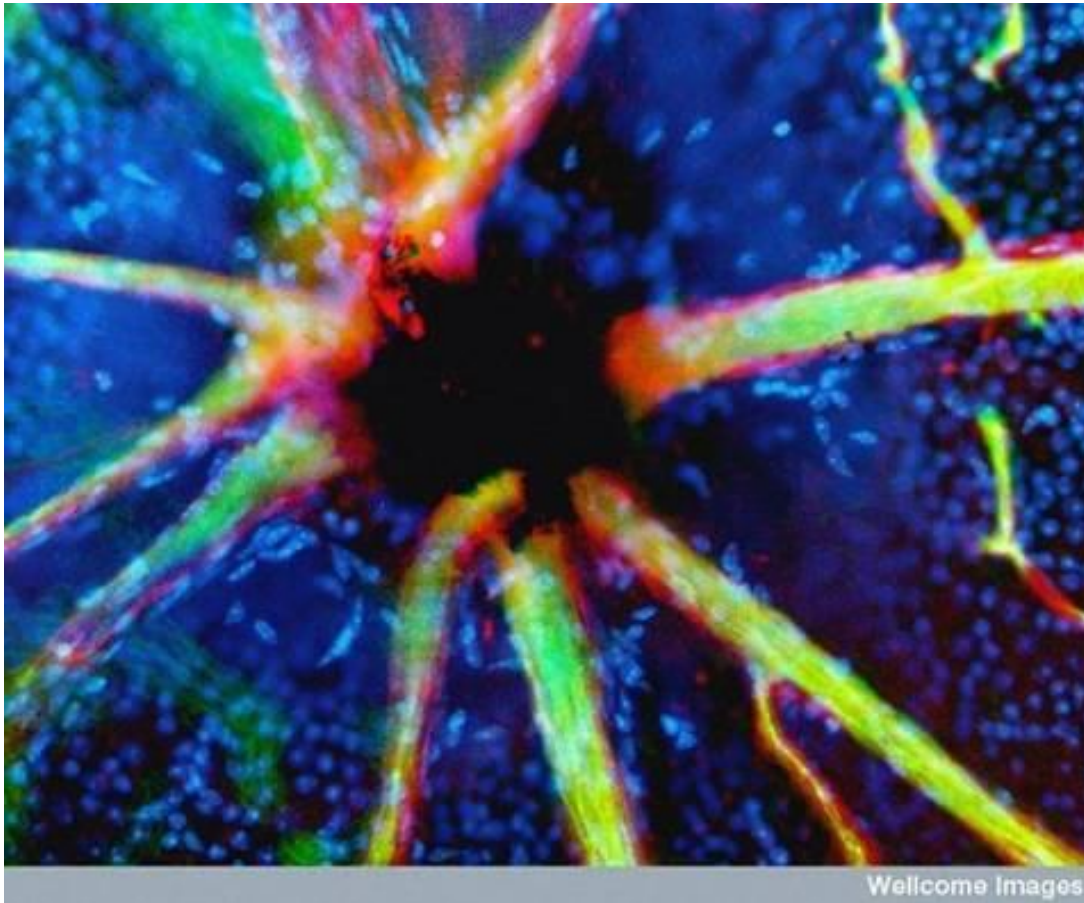
Wellcome Images

3. Purkinje Neurons

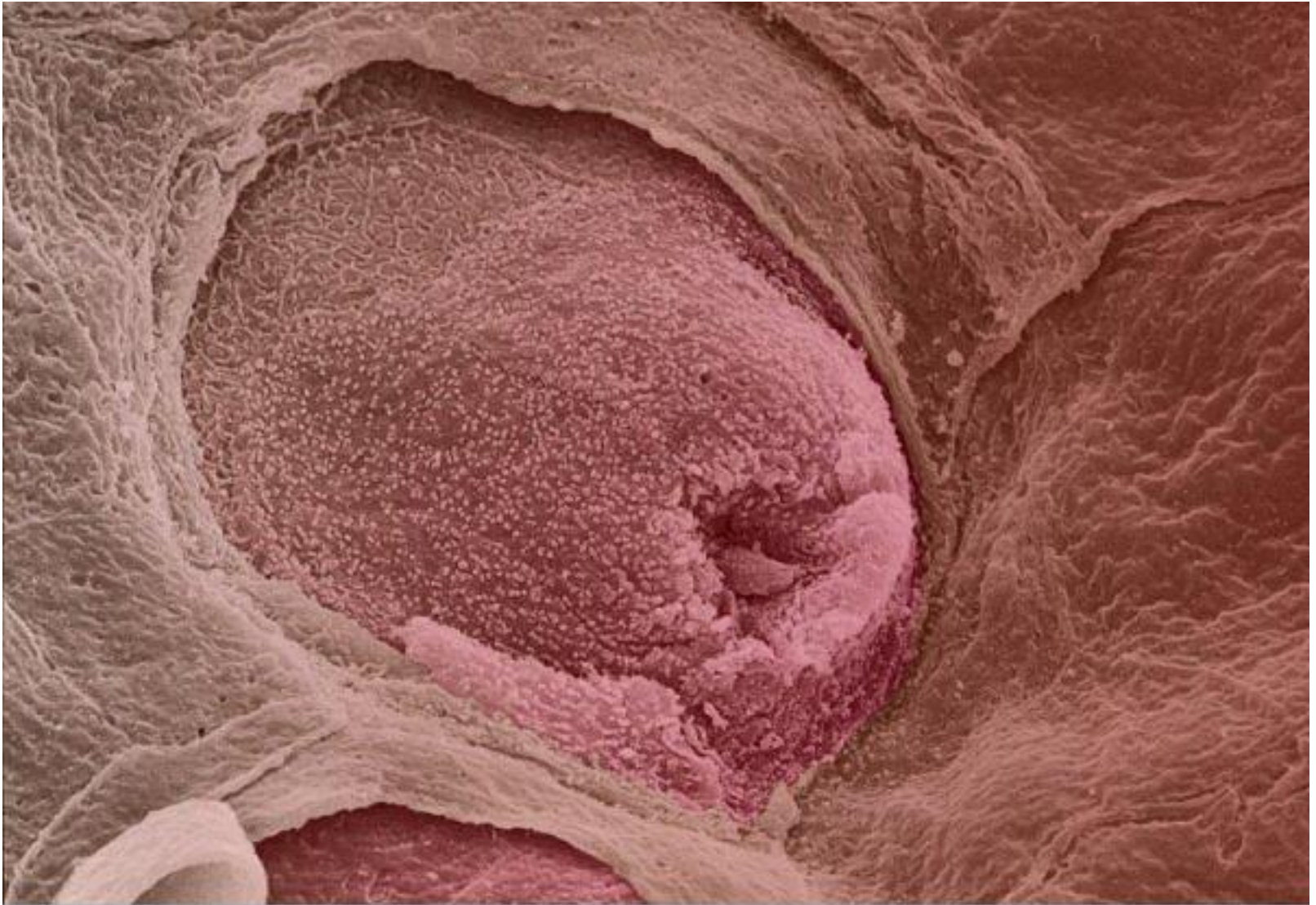


Wellcome Images

4. Hair Cell in the Ear (hair cell stereo cilia inside the ear. These detect mechanical movement in response to sound vibrations)

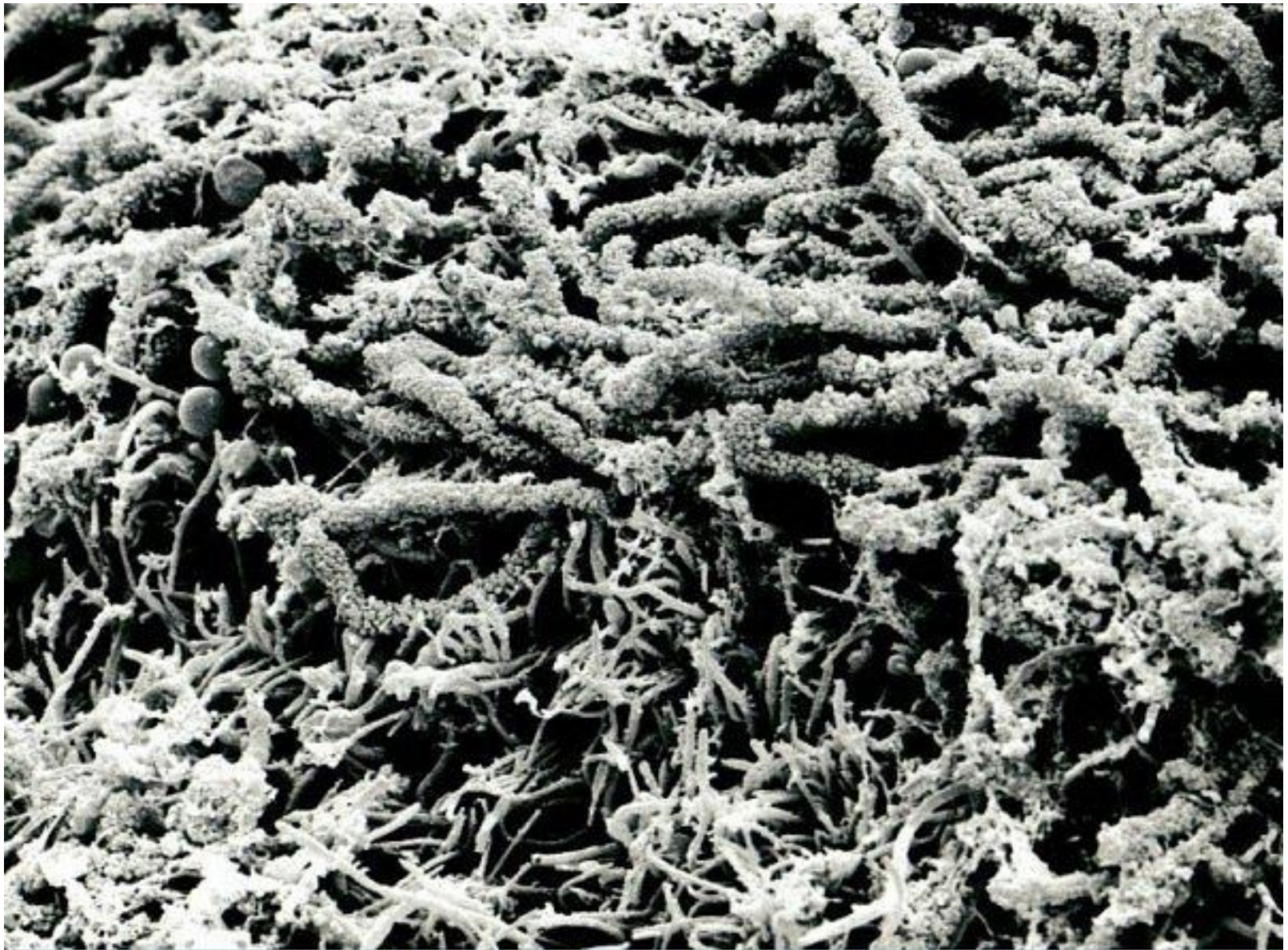


5. Blood Vessels Emerging from the Optic Nerve



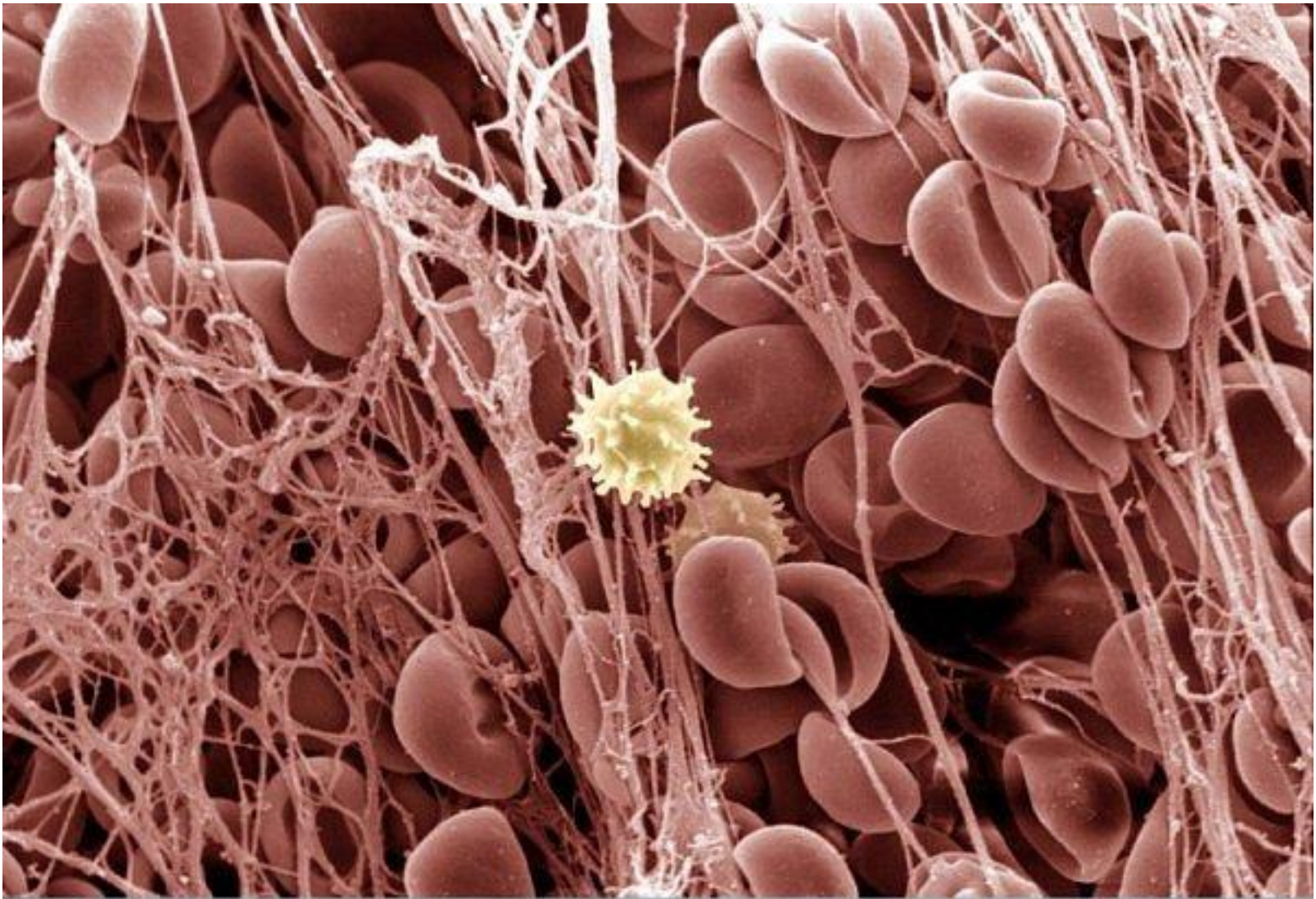
Wellcome Images

6. Tongue with Taste Bud



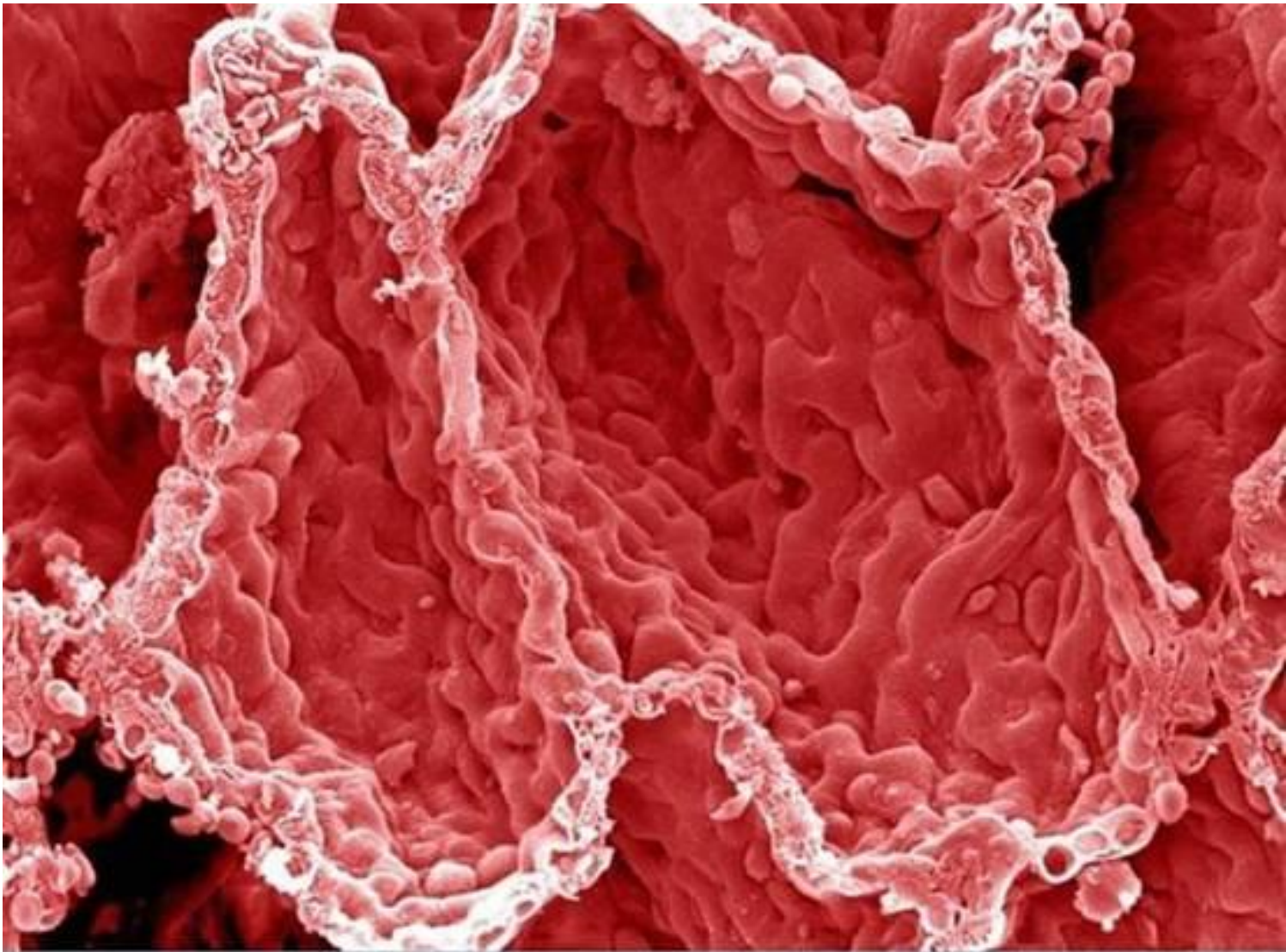
Wellcome Images

7. Tooth Plaque



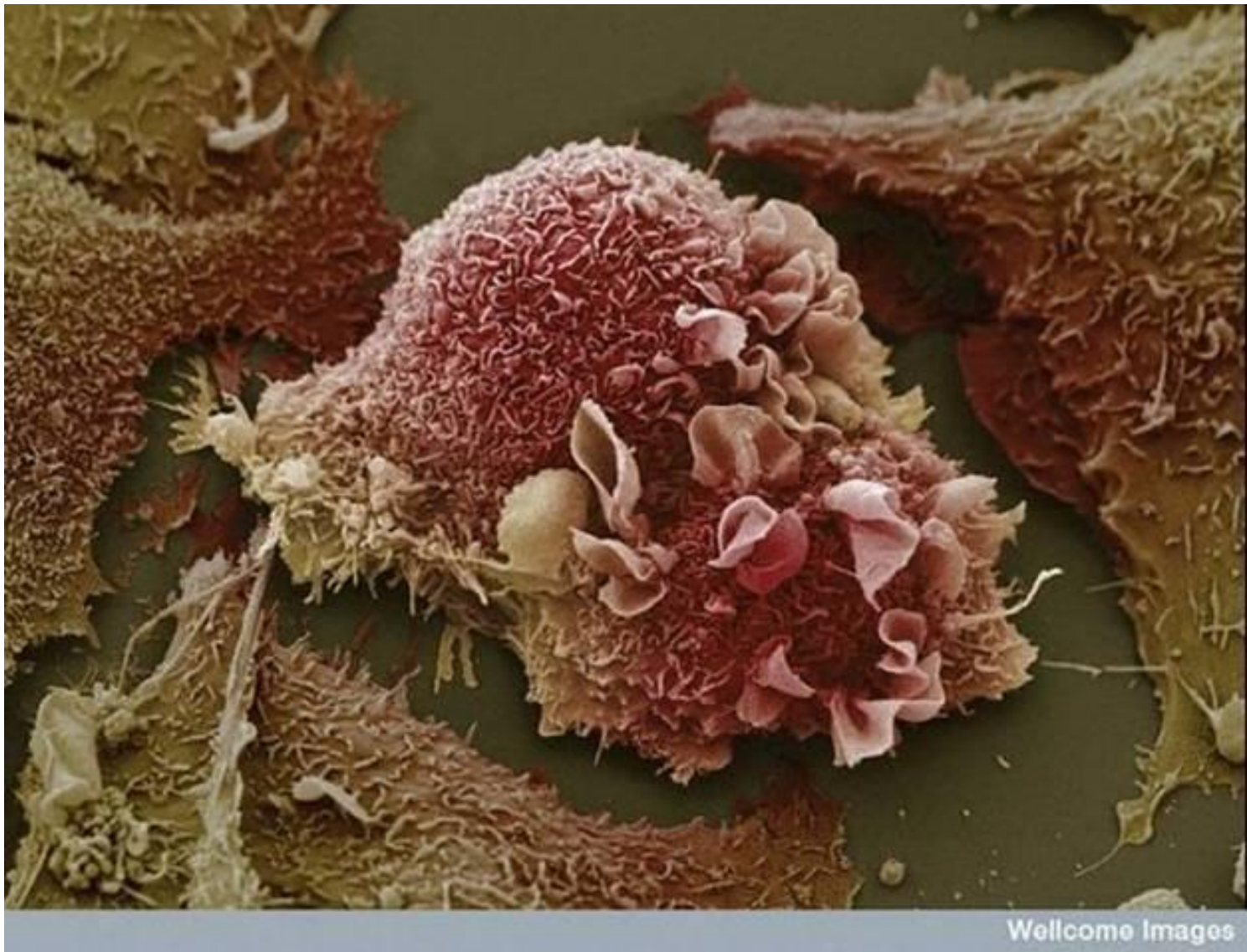
Wellcome Images

8. Blood Clot (The cell in the middle is a white blood cell.)



Wellcome Images

9. Alveoli in the Lung

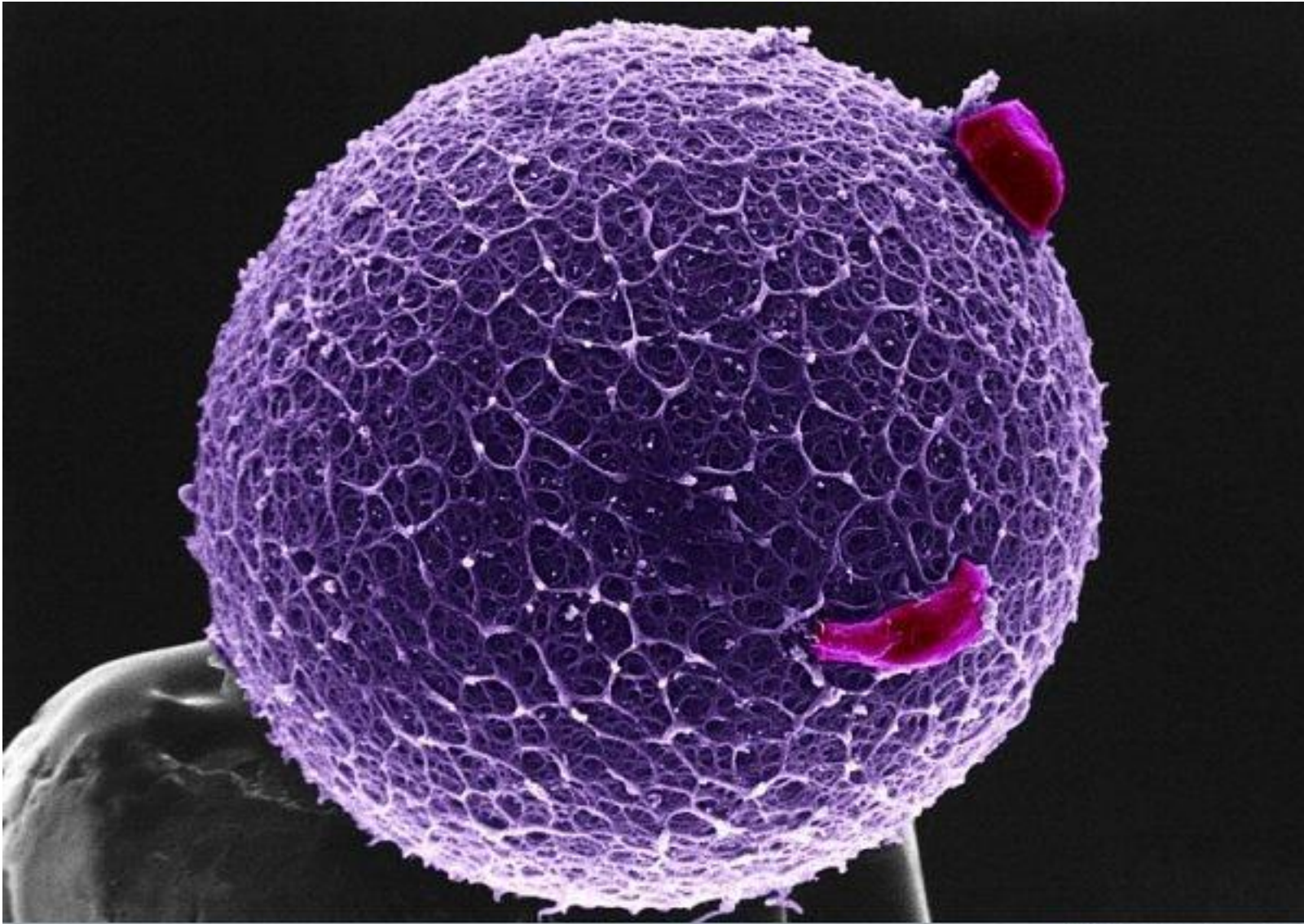


10. Lung Cancer Cells



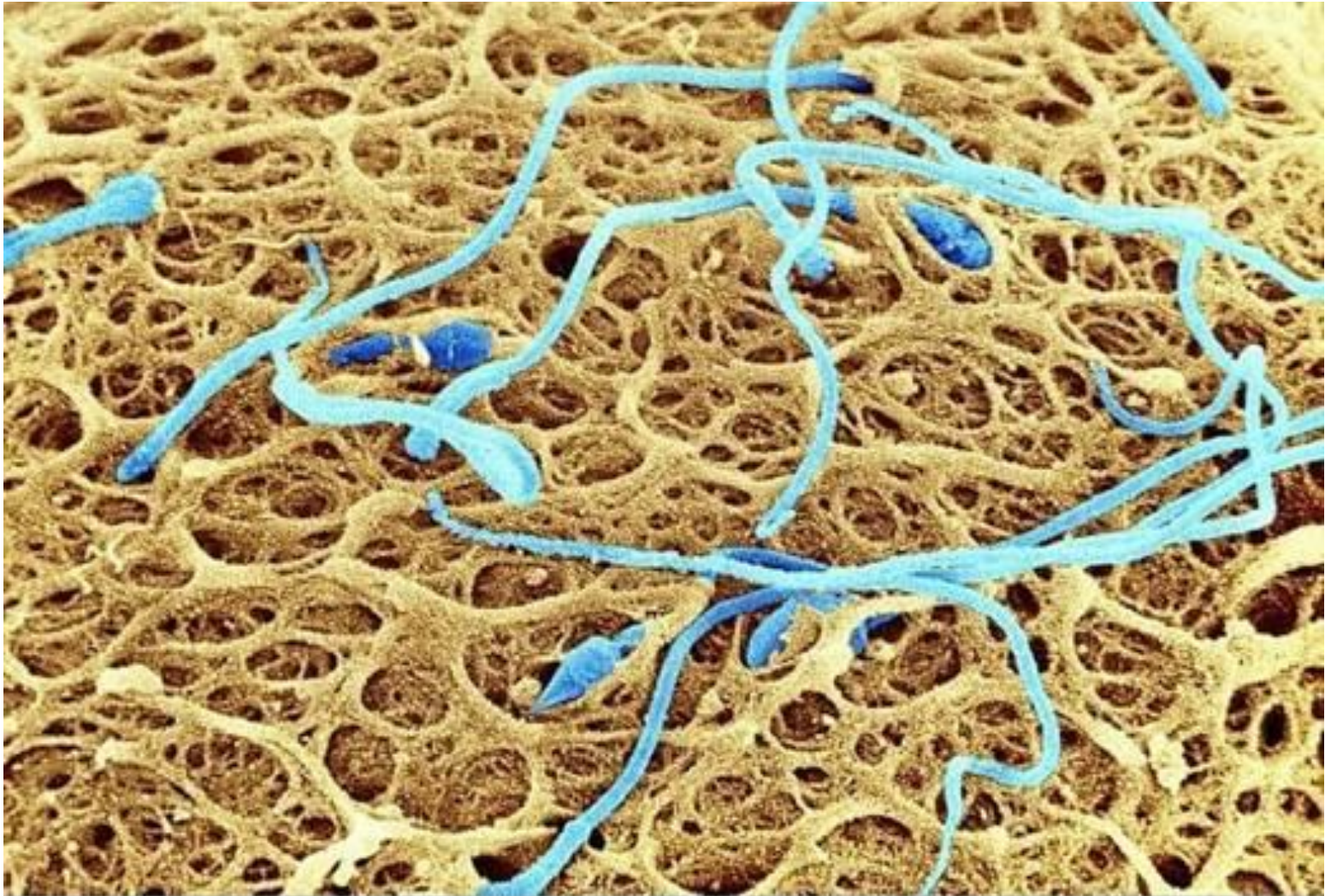
Wellcome Images

11. Villi of Small Intestine (Look closely and you will see some food stuck in one of the crevices.)



Wellcome Images

12. Human Egg with Coronal Cells (coronal cells = cumulus granulosa cells)



Wellcome Images

13. Sperm on the Surface of a Human Egg.



14. Human Embryo and Sperm (five days after the fertilization of an egg, with some remaining sperm cells still sticking around. The embryo and sperm cell nuclei are stained purple while sperm tails are green.)



15. Colored Image of a 6 day old Human Embryo Implanting itself onto the wall of the womb.